

CAUTION: BEFORE DIGGING CALL 800-227-6477

200 AMP – MINIMUM 2-1/2" SCH 40 GRAY PVC CONDUIT WITH PULL STRING (MEMBER)
 400 AMP – MINIMUM 3" SCH 40 GRAY PVC CONDUIT WITH PULL STRING (MEMBER)


NOTES:

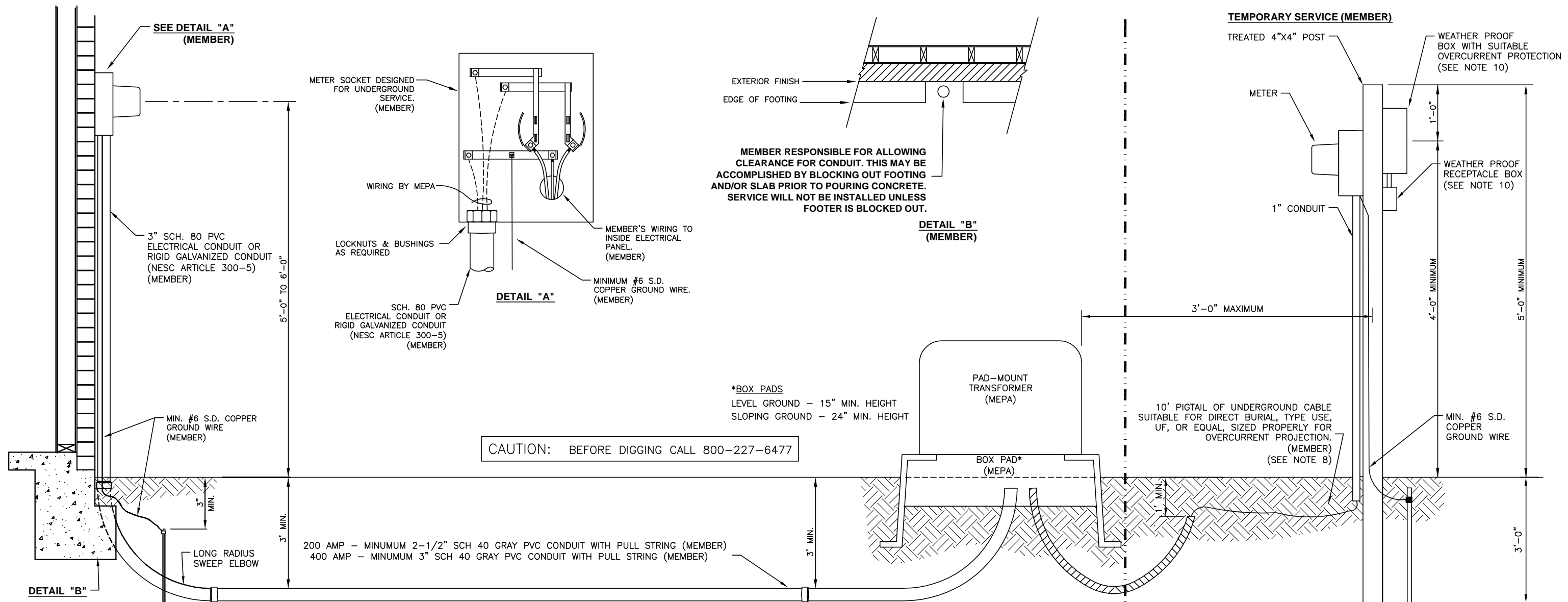
1. (MEMBER) = FURNISHED & INSTALLED BY MEMBER.
 (MEPA) = FURNISHED & INSTALLED BY MEPA.
2. MEMBER RESPONSIBLE FOR BLOCKING OUT FOOTING AND OR SLAB CONDUIT UNDERNEATH METER PRIOR TO POURING CONCRETE.(SEE DETAIL "B")
3. CONDUIT FROM METER INTO GROUND MUST BE STRAIGHT WITHOUT BENDS OR REDUCERS AROUND OR OVER CONCRETE, FOOTER, OR OBSTACLE.(SEE DETAIL "B")
4. HORIZONTAL CONDUIT(S) MUST BE BURIED A MINIMUM OF 3 FT.
5. VERTICAL CONDUIT-SCHEDULE 80; HORIZONTAL CONDUIT-SCHEDULE 40.
6. ALL CONDUIT JOINTS MUST BE GLUED WATER TIGHT.
7. NO MORE THAN TWO(2) 45 OR ONE(1) 90 DEGREE BENDS ARE PERMITTED IN HORIZONTAL CONDUITS BETWEEN METER AND MEPA EQUIPMENT. MAXIMUM DISTANCE 150 FEET.

OVERHEAD ASSEMBLY

8. MEMBER RESPONSIBLE FOR FURNISHING & INSTALLING TEMPORARY METER POLE WITHIN 3 FT. OF TRANSFORMER LOCATION. (SEE TEMPORARY METER POLE INSTALLATION GUIDE)
9. TEMPORARY POLE AND WIRING SHALL COMPLY WITH THE MOST CURRENT NATIONAL ELECTRIC CODE (NEC) INCLUDING ARTICLE 305 AND ANY OTHER LOCAL CODE.
10. GROUND FAULT PROTECTION FOR PERSONNEL ON CONSTRUCTION SITES SHALL BE PROVIDED TO COMPLY WITH THE NEC. ALL 125 VOLT, SINGLE PHASE, 15 AND 20 AMP RECEPTACLE OUTLETS THAT ARE IN USE BY PERSONNEL SHALL HAVE GROUND FAULT CIRCUIT INTERRUPTER (GFCI) PROTECTION.
11. MEMBER MUST ALSO PROVIDE: (3) THREE 10-FOOT SECTIONS OF CONDUIT (1) ONE 3" WEATHERHEAD, AND 5 CONDUIT STRAPS (TO BE INSTALLED BY MEPA)

REV	LTR	DATE	DESCRIPTION	APPR
REVISIONS				


MAGNOLIA
 ELECTRIC POWER ASSOCIATION
 MCCOMB MISSISSIPPI
UNDERGROUND SERVICE GUIDE
OVERHEAD TO UNDERGROUND
MEPA-103




NOTES:

1. (MEMBER) = FURNISHED & INSTALLED BY MEMBER.
(MEPA) = FURNISHED & INSTALLED BY MEPA.
2. MEMBER RESPONSIBLE FOR BLOCKING OUT FOOTING AND OR SLAB CONDUIT UNDERNEATH METER PRIOR TO POURING CONCRETE.(SEE DETAIL "B")
3. CONDUIT FROM METER INTO GROUND MUST BE STRAIGHT WITHOUT BENDS OR REDUCERS AROUND OR OVER CONCRETE, FOOTER, OR OBSTACLE.(SEE DETAIL "B")
4. HORIZONTAL CONDUIT(S) MUST BE BURIED A MINIMUM OF 3 FT.
5. VERTICAL CONDUIT-SCHEDULE 80; HORIZONTAL CONDUIT-SCHEDULE 40.
6. ALL CONDUIT JOINTS MUST BE GLUED WATER TIGHT.
7. NO MORE THAN TWO(2) 45 OR ONE(1) 90 DEGREE BENDS ARE PERMITTED IN HORIZONTAL CONDUITS BETWEEN METER AND MEPA EQUIPMENT. MAXIMUM DISTANCE 150 FEET

TEMPORARY SERVICE NOTES:

8. MEMBER RESPONSIBLE FOR FURNISHING & INSTALLING TEMPORARY METER POLE WITHIN 3 FT. OF TRANSFORMER LOCATION.
9. TEMPORARY POLE AND WIRING SHALL COMPLY WITH THE MOST CURRENT NATIONAL ELECTRIC CODE (NEC) INCLUDING ARTICLE 305 AND ANY OTHER LOCAL CODE.
10. GROUND FAULT PROTECTION FOR PERSONNEL ON CONSTRUCTION SITES SHALL BE PROVIDED TO COMPLY WITH THE NEC. ALL 125 VOLT, SINGLE PHASE, 15 AND 20 AMP RECEPTACLE OUTLETS THAT ARE IN USE BY PERSONNEL SHALL HAVE GROUND FAULT CIRCUIT INTERRUPTER (GFCI) PROTECTION.
11. MEMBER TO PROVIDE 1- 10' SECTION OF CONDUIT AND 1 90 DEGREE SWEEP ELBOW FOR TEMPORARY PAD INSTALLATION

REV	LTR	DATE	DESCRIPTION	APPR
A		8/8/06	CORRECT TO DATE	AJA
REVISIONS				


MAGNOLIA
 ELECTRIC POWER ASSOCIATION
 MCCOMB MISSISSIPPI

UNDERGROUND SERVICE GUIDE
UNDERGROUND TO UNDERGROUND
MEPA-104